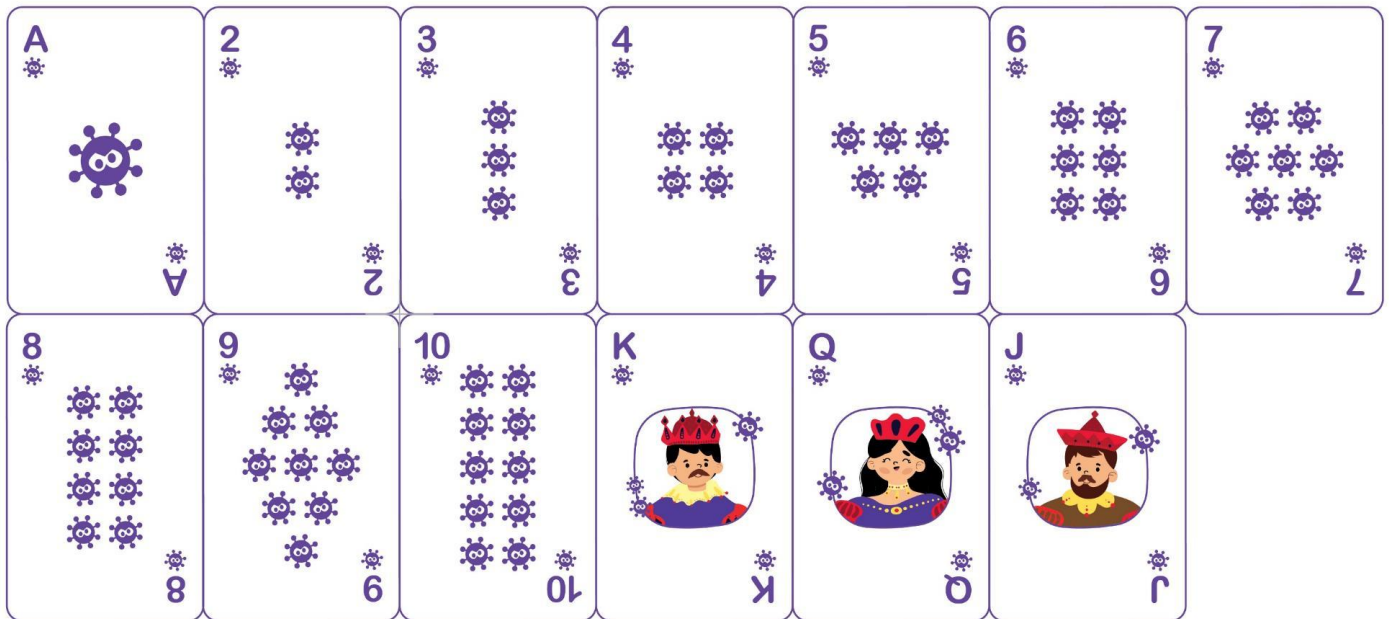


# LOSE THE GERMS

Welcome to the printable version of Lose the Germs! The following note outlines the key components of the game and printing and sourcing guidelines for the game elements.

## Lose the Germs Card Deck



# Lose the Germs Cards Box



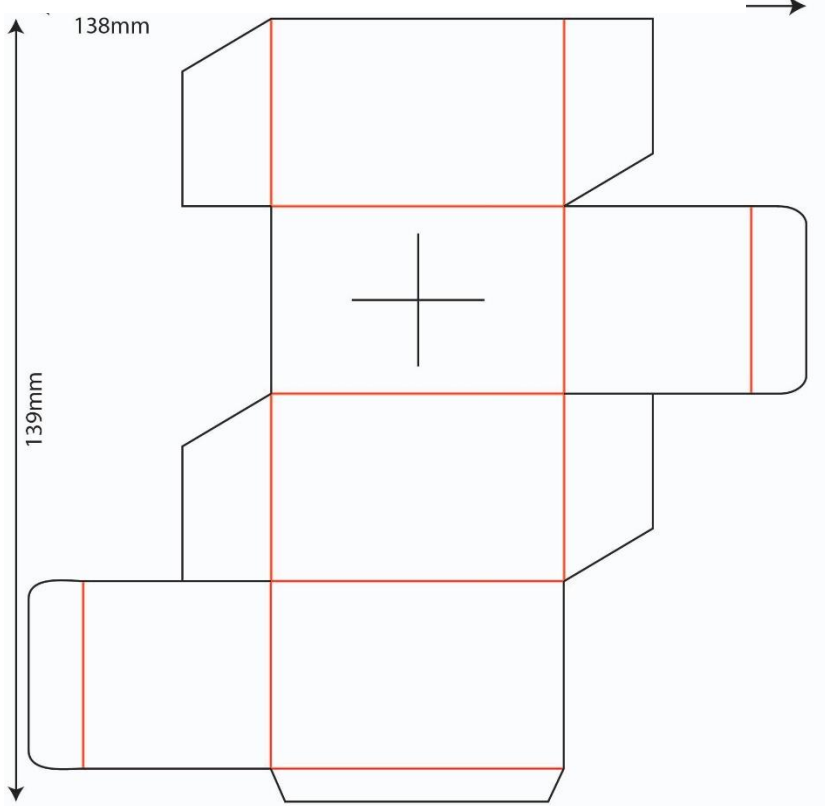
Reward – Trophy (Front)



Reward – Trophy (Back)



Reward – Trophy (Pedestal)



Pledge Poster



# Lose the Germs Instructions

## Lose the Germs

Age

3-5  
Supervised Play

6-8  
Guided Play

8+  
Independent Play

### Game Objective

Pair all soap-using-occasion cards, with illness-causing germ cards, to destroy them!

### Set up

- 1 Pick any 12 cards from a shuffled deck and lay them face down.



### Here's what you'll need

52 Germ and Soap Cards



### How to Play

- 1 Each player takes a turn to flip any two cards:  
a) If the pair of flipped cards is a soap and germ, the player discards them.      b) If the pair of flipped cards is 2 germs or 2 soaps, the player places them back, face down.

- 2 Keep discarding any pairs of soap and germ cards.



- 3 If only soap cards are left, they can be discarded and the players win.

- 4 If only germ cards are left, then players take turns to draw cards from the shuffled deck to pair the germs with soaps, and discard – until no cards are left!

- 5 The players together take the Handwashing with Soap Champion Pledge.



- 6 The players get the H for Handwashing champion reward!

Note: Check the bottom side of the white pedestal to see 'How to Assemble' the trophy

Reward!



Age

3-5  
Supervised Play

6-8  
Guided Play

8+  
Independent Play

## Game Objective

Pair all soap-using-occasion cards, with illness-causing germ cards, to destroy them!

## Set up

- 1 All 52 cards are shuffled and one random soap card is removed and kept aside - starting the 'discard pile'.
- 2 Remaining cards are evenly distributed amongst the players.

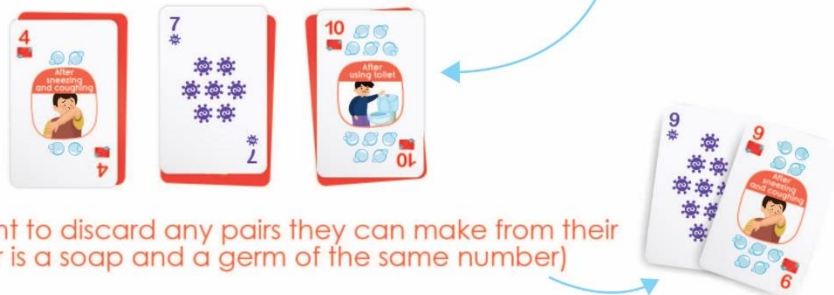
Here's what you'll need

52 Germ and Soap Cards



## How to Play

- 1 Each player blindly arranges card pairs – such that each pair is a stack of 2. (bottom card face down, top card face up)



- 2 Players take a moment to discard any pairs they can make from their face up cards. (a pair is a soap and a germ of the same number)
- 3 Players take turns to pick a card from the person to their left and try to make pairs.
- 4 If they are able to make a soap and germ card pair – they discard it; If they aren't able to make any pairs, they add it to their set of cards.
- 5 Only when a top card from the stack of 2 is removed can the bottom card be visible to the rest of the players.
- 6 The player with the last germ card has to say the Handwashing with Soap Champion Pledge along with the other players to get the hidden soap card that can destroy the germ!
- 7 The winner gets the H for Handwashing champion reward!



Note: Check the bottom side of the white pedestal to see 'How to Assemble' the trophy

Age

3-5  
Supervised Play

6-8  
Guided Play

8+  
Independent Play

## Game Objective

Pair all soap-using-occasion cards, with illness-causing germ cards, to destroy them!

## Set up

- 1 All 52 cards are shuffled and one random soap card is removed and kept aside - starting the 'discard pile'.
- 2 Remaining cards are distributed amongst the players.
- 3 Pairs of germ and soap cards in players' set of cards, are discarded into the 'pile' - by matching numbers.



## Here's what you'll need

52 Germ and Soap Cards



## How to Play

- 1 The players take turns to pick a card at random from the person to their left and try to pair it with their existing cards.
- 2 If they are able to make a pair - they discard it; If they aren't able to make any pairs, they add it to their set of cards.
- 3 The player with the last germ card has to say the Handwashing with Soap Champion Pledge along with the others to get the hidden soap card that can destroy the germ!
- 4 The winner gets the H for Handwashing champion reward!



Note: Check the bottom side of the white pedestal to see 'How to Assemble' the trophy

Reward!



## Printing and Sourcing Guidelines

Play Elements	Quantity per set	Size (in mm)	Sourcing	Printing	Lamination	Punching	Cutting
Cards	52	57 x 89		Yes		Yes	
Trophy	1	83 x 107	Yes	Yes	Yes	Yes	
Trophy Pedestal	1	138 x 139		Yes	Yes	Yes	
Cards Box	1	150 x 167		Yes		Yes	